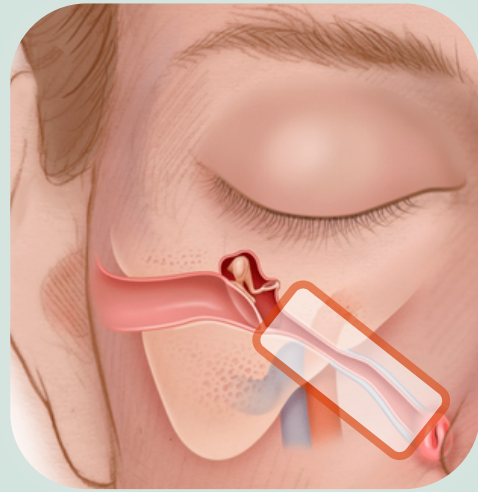


The Eustachian Tube



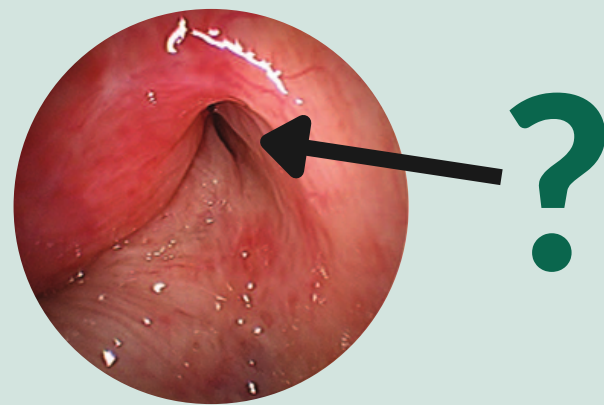
A narrow passage that connects the pharynx to the middle ear

Equalizes pressure on each side of the eardrum

>2 million

adults seek treatment annually in the US for dysfunction in Eustachian Tube dysfunction (ETD)

How do you solve a problem that you can't see?



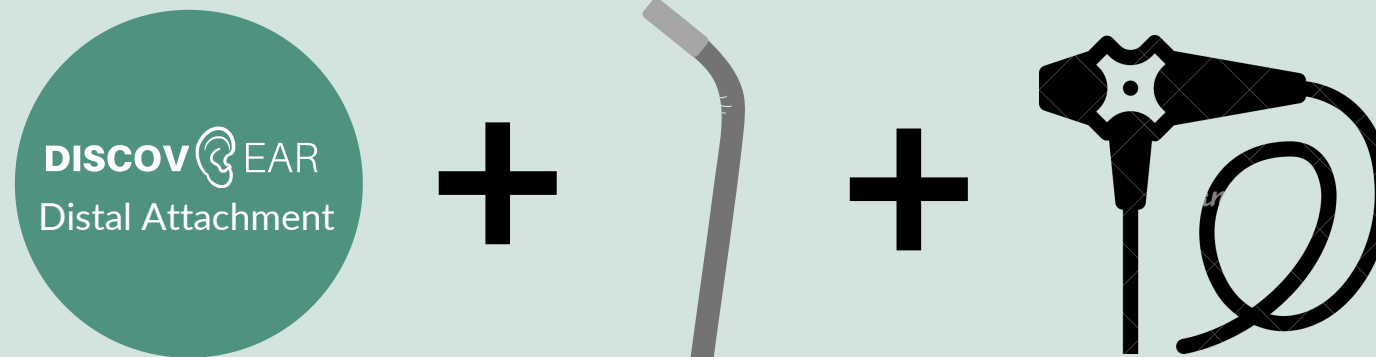
Current endoscopes **fail to visualize** the ET lumen, **impeding proper treatment** utilization and **risking patient safety**

DISCOV^{EAR}

Seeing clear to help your ear!

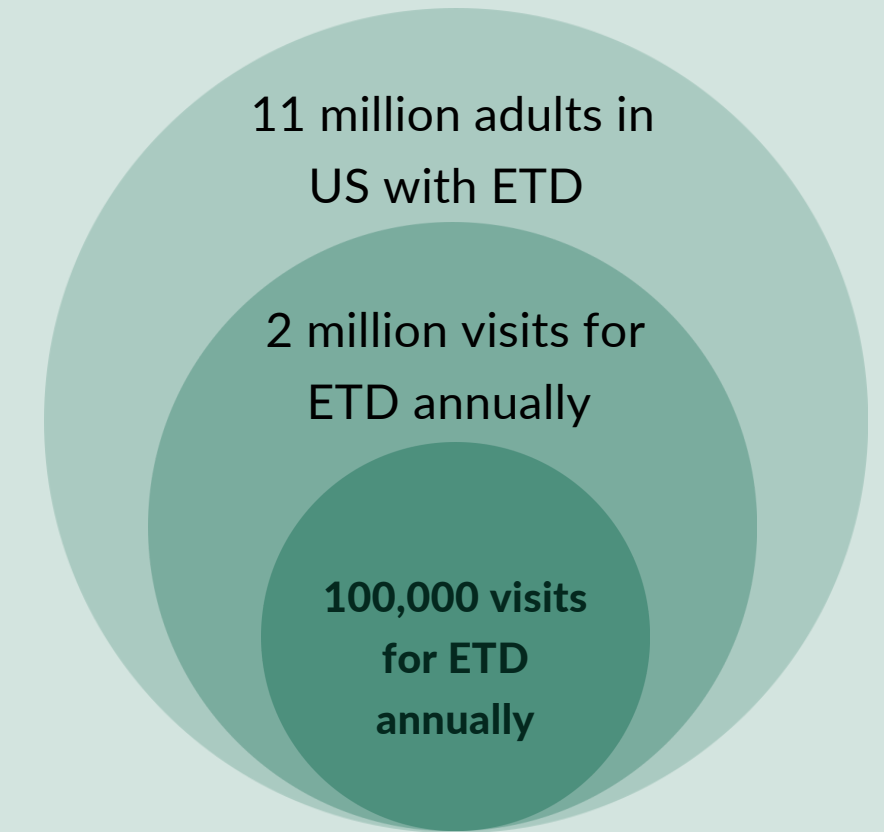
Our Solution

Integrates with existing endoscopy technology to discover more about your Eustachian tube!



- Broad Field of View
- Adequate Resolution
- Single Operator
- Dimensional Fit
- Minimal Side Effects

Target Customers



Connect with us!
bmedesignteam18@gmail.com
 Twitter @Discov_EAR

References
 1. Vila, P. M., Thomas, T., Liu, C., Poe, D., & Shin, J. J. (2017). The Burden and Epidemiology of Eustachian Tube Dysfunction in Adults. *Otolaryngology - Head and Neck Surgery (United States)*, 156(2). <https://doi.org/10.1177/0194599816683342>
 Images:
<https://otosurgeryatlas.stanford.edu/otologic-surgery-atlas/surgical-anatomy-of-the-ear/eustachian-tube/>
https://www.researchgate.net/figure/Grade-2-A-Mildly-inflamed-mucosa-B-No-apparent-compromise-of-dilation_fig2_284136515