

TEMPO

BACKGROUND

- **765,000** cardiac surgery patients undergo temporary pacing in the US annually
- Temporary epicardial pacing wires (TEPW) are used to prevent or normalize postoperative dysrhythmias
- TEPWs are directly pulled from the body during removal
- **1%** of wire removals produce **critical complications** such as cardiac perforation and tamponade
- Preventative measures against complications unnecessarily exacerbate hospital workflow congestion

SOLUTION

- Similar to standard TEPW
- Easily integrates into surgeon and nurse workflow
- Low cost with minimal changes to materials used

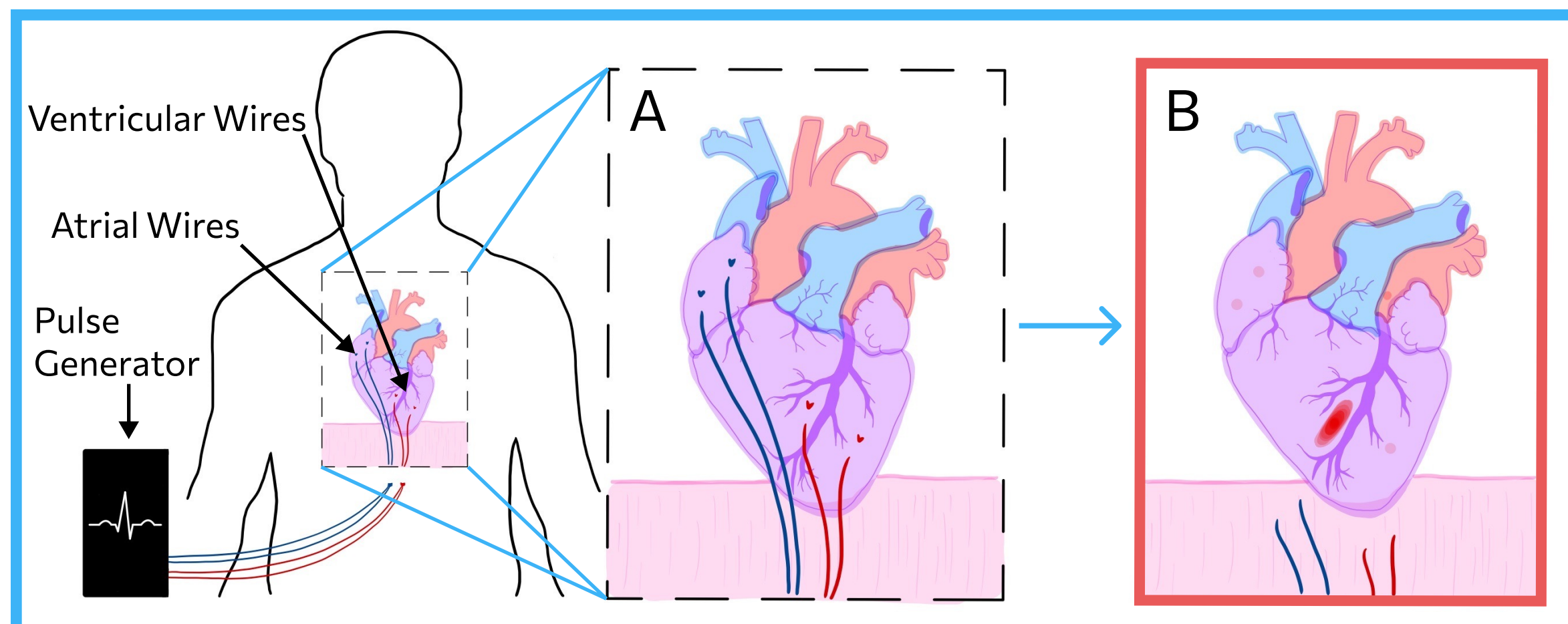


Fig. 1 (Left) Standard TEPW placement
A. Placement of ventricular and atrial pacing wires
B. Complications during pacing wire removal

BENEFITS

- Negligible Force on Heart
- Optimized Workflow
- Reduced Risk of Tamponade
- Paces Heart at Current Standard
- Shorter Patient Stay
- Lower Hospital Expenses

NEXT STEPS

- Reiterative testing
- In-vivo testing
- Patient studies
- Standardization of manufacturing process
- Intellectual Property

