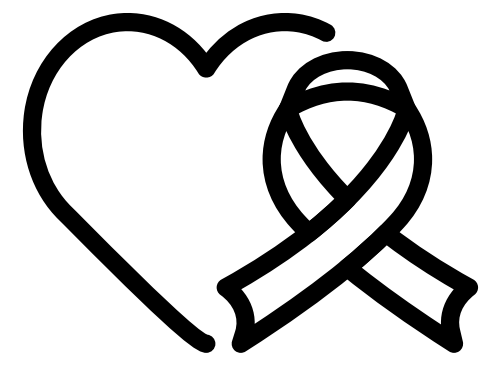
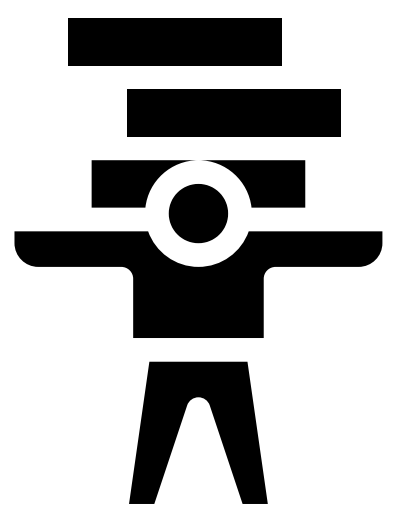


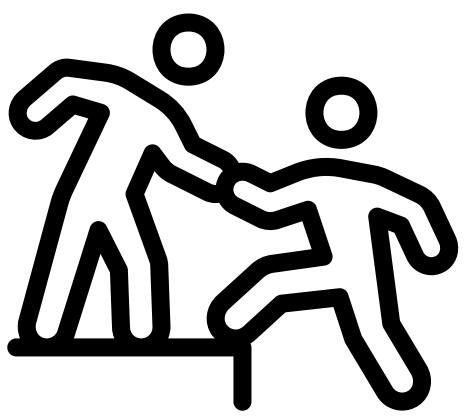
Background



Complexity of Cancer Care overwhelms patients and families post-diagnosis.



Information Overload is tough for seeking reliable and relevant insights for patients and families.



Timely Assistance for support and guidance is crucial for patients and families facing cancer-related challenges.



Accessibility Barriers impact underserved communities and rural areas disproportionately.

With the power of **large language models**, OncoBot curates **accurate, timely, and empathetic** cancer information.

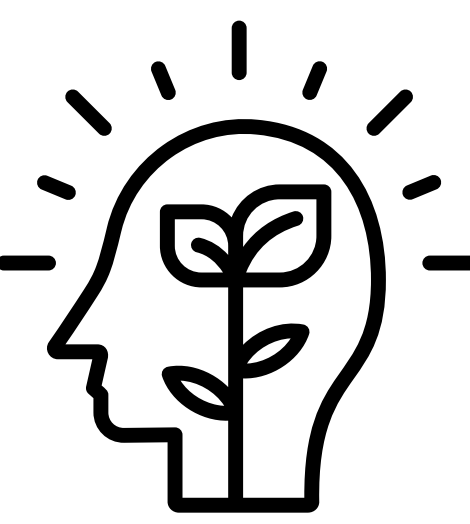
Criteria



Accurate



Empathetic

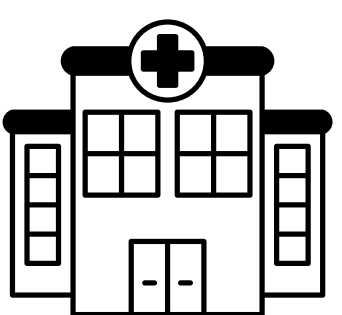


Clear



Accessible

What's Different?



Fine tuned information on a **custom corpus**.



Upload medical documents & have it **summarized**.



Patient privacy is paramount and maintained.

OncoBot Solution

The screenshot shows the OncoBot interface. At the top, it says "OncoBot" and "OncoBot can make mistakes. Please consult with your doctor on all subject matter." Below this is a "Welcome!" message and a prompt: "How can I assist you? Click a suggestion below or enter a question in the text box." There are four suggestion buttons: "How to feel better after being diagnosed with cancer?", "What is cancer?", "Why do some people get cancer and not others?", and "What are the stages of cancer, and what do they mean?". A user has entered the question "What is cancer, in 50 words or less?". The bot's response is: "Cancer is a complex and devastating disease that affects millions of people worldwide. It is characterized by the uncontrollable growth and spread of abnormal cells within the body. Cancer can have various causes and can affect any part of the body. It often brings physical, emotional, and mental challenges for both patients and their loved ones, requiring support, compassion, and understanding." At the bottom, there are five numbered callouts: 1. Message input field, 2. Suggestion buttons, 3. Feedback buttons (thumbs up/down), 4. Regenerate button, and 5. Copy to clipboard button.

- 1 **File Summarizer:** Upload a report to explain medical jargon.
- 2 **Prompt Suggestions:** Suggests popular questions to ask OncoBot.
- 3 **Feedback Buttons:** Share your feedback on the bot's responses.
- 4 **Regenerate Button:** Ask OncoBot to rephrase its last answer.
- 5 **Copy to Clipboard:** Easily copy the bot's response to share/store.

Testing and Results

Disagree Agree

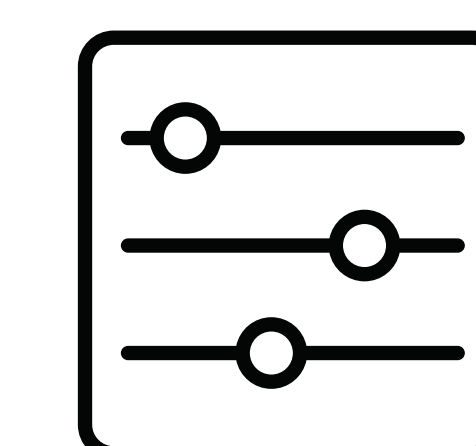
90% of user found OncoBot **easy to navigate** and **user friendly**

75% of users found OncoBot's UI **appealing**

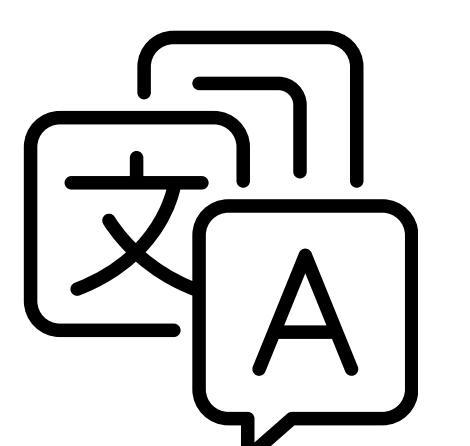
80% of users found OncoBot generated **prompt** responses

Overall, while OncoBot demonstrated **strengths in usability and response time**, enhancing its **content accuracy and emotional engagement remains critical** for improving user satisfaction and trust.

Future Directions



Customizable

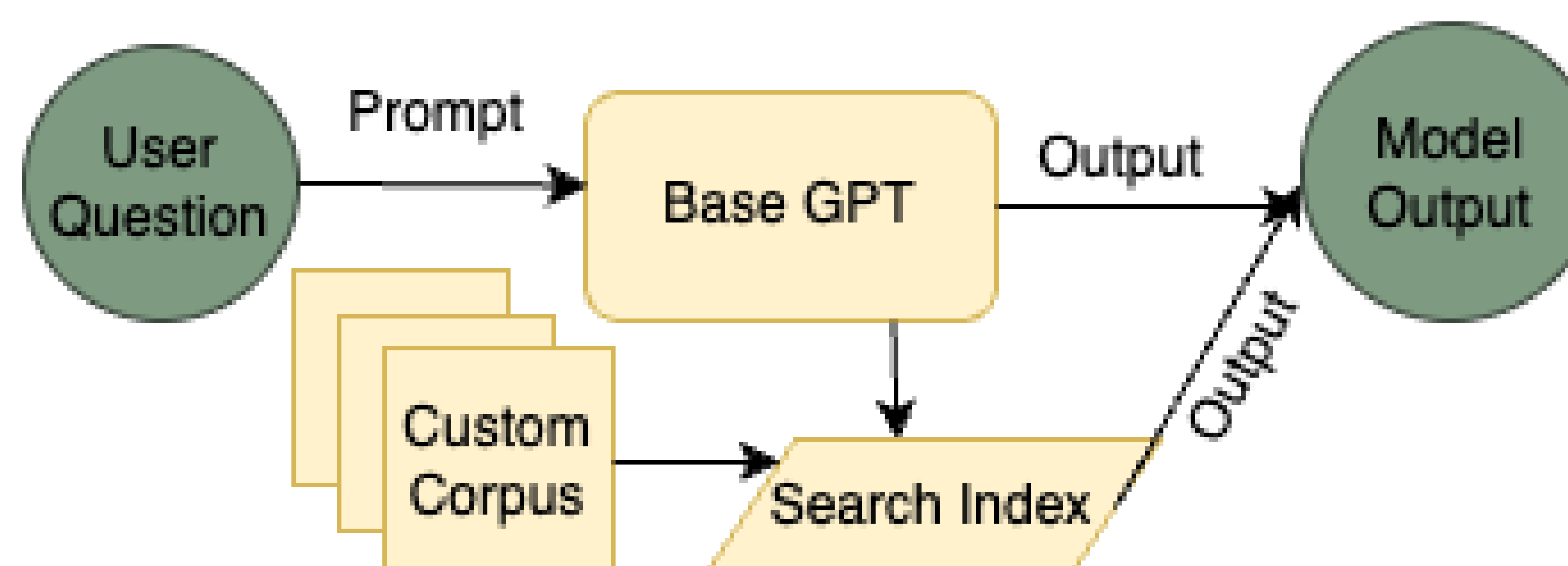


Multilingual Support



Speech-to-text

How It Works



Meet the Team



Ujvala Pradeep CS/CogSci '24 Himanshi Sharma ChemBE '25 Resham Talwar BME '25 Dee Velazquez CS/ChemBE '24

We'd like to thank our faculty mentor, **Dr. Nusaybah Abu-Mulaweh**, our TA, **Catherine Wang**, and the team at Shoreline Health.